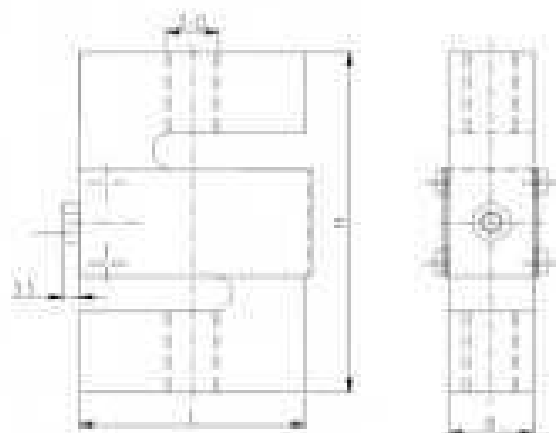


DEE/DEF-A/-SS/-ASS Loadcell

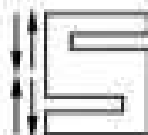
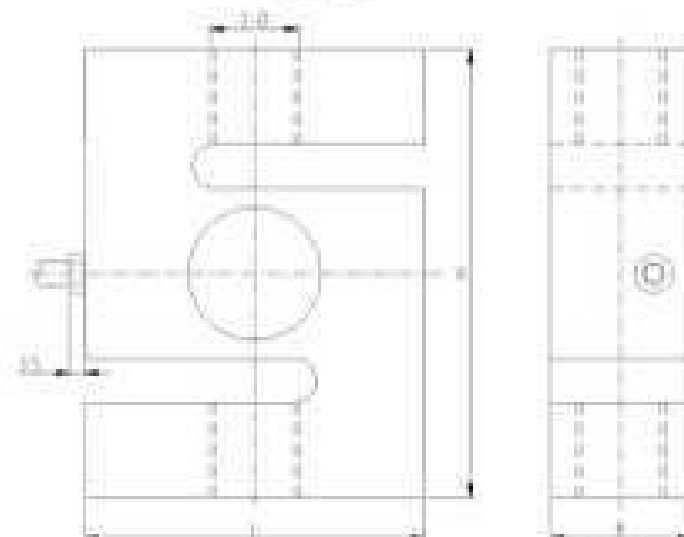
DEE/DEF-A/-SS/-ASS



100-1000kg



1.2-5t



额定载荷(kg) Rated Load	D	L	H	B
100-750	M12	51	76.2	19.1
1000	M12	51	76.2	25.4
1200-5000	M20x1.5	76.2	100.4	31.8

吊钩秤、皮带秤、配料系统

Crane scale, belt scale, blending system

TECHNICAL PARAMETER

4Wires:Exc+(红,Red);Exc-(黑,Black);Sig+(绿,Green);Sig-(白,White)

额定载荷 Rated capacities(Emax)	100,150,200,250,300,500,750kg,1,1.2,1.5,2,3,5t	温度补偿范围 Temperature range, compensated	-10℃~+40℃
灵敏度 Sensitivity	2.0±0.003mV/V(DEE);3.0±0.003mV/V(DEF)	工作温度范围 Temperature range, operating	-30~+70℃
精度等级 Accuracy class	C2-C5	安全过载 Maximum safe overload	120%F.S
零点平衡 Zero balance	±1%F.S	极限过载 Ultimate overload	150%F.S
零点温度影响 TCO	±0.02%F.S/10℃	推荐激励电压 Excitation,recommend	10-12V DC
输出温度影响 TC SPAN	±0.02%F.S/10℃	最大激励电压 Excitation,maximum	15V DC
输入阻抗 Input impedance	400±20Ω	防封等级 Protection class	IP65(100-1000kg);IP68(1200-5000kg)
输出阻抗 Output impedance	352±3Ω	材质 Construction	合金钢Alloy Steel, 不锈钢Stainless Steel
绝缘电阻 Insulation impedance	≥5000MΩ	电缆 Cable	Length:5m Diameter:φ5mm