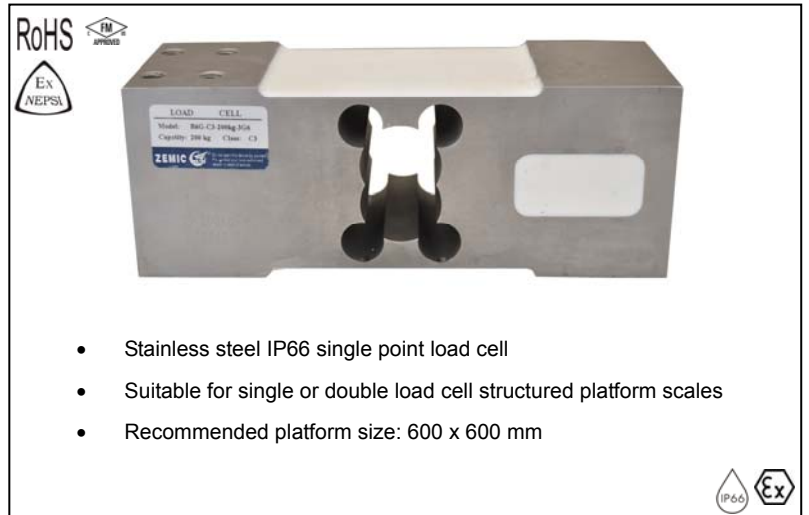


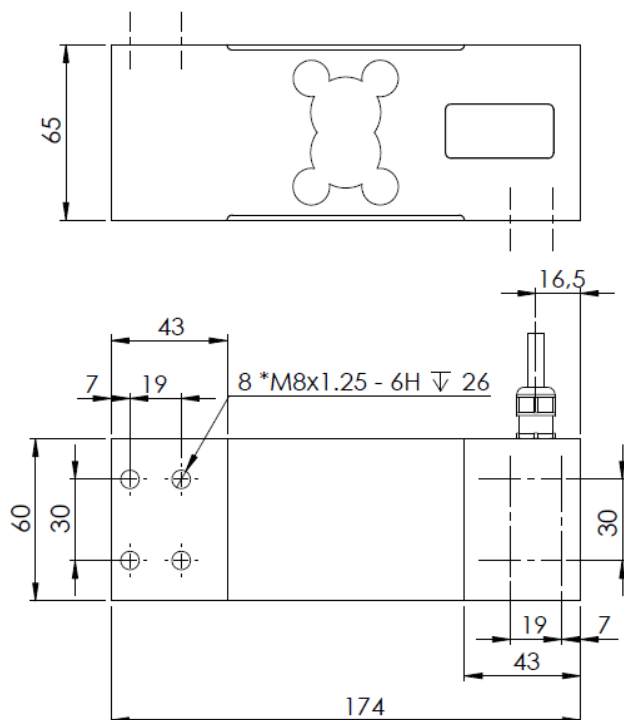
Capacity	Accuracy	Part-Number
100 kg	C3	B6G-C3-100kg-3G6
150 kg	C3	B6G-C3-150kg-3G6
200 kg	C3	B6G-C3-200kg-3G6
250 kg	C3	B6G-C3-250kg-3G6
300 kg	C3	B6G-C3-300kg-3G6
500 kg	C3	B6G-C3-500kg-3G6
600 kg	C3	B6G-C3-600kg-3G6



Specification:

Accuracy class		C3		
Output sensitivity (= FS)	mV/V	2.0 ± 0.2		
Maximum capacity (E _{max})	kg	100, 150, 200, 250, 300, 500, 600		
Maximum number of load cell intervals (n _{LC})		3000		
Ratio of minimum LC verification interval Y = E _{max} / v _{min}		7500		
Combined Error	%FS	≤ ± 0.020		
Safe overload	of E _{max}	150 %		
Ultimate overload	of E _{max}	300 %		
Zero balance	of FS	≤ ± 1.0 %		
Excitation, recommended voltage	V	5 ~ 12		
Excitation maximum	V	18		
Terminal resistance, input	Ω	385 ± 5		
Terminal resistance, output	Ω	350 ± 3		
Insulation impedance	MΩ	≥ 5000 (at 50VDC)		
Temperature range, compensated	°C	-10 ~ +40		
Temperature range, operating	°C	-35 ~ +65		
Element material		Stainless steel		
Ingress Protection (according to EN 60529)		IP66		
Recommended torque on fixation bolts	Nm	20		
ATEX classification (optional)		II1G Ex ia II1C T4	II1D Ex iaD 20 T73°C	II3G nL IIC T4

Outline Dimensions in mm



Wiring:

- Shielded, 6 conductor cable.
- Standard cable length: 3m.
- Cable type and cable length for customer's own application are available on request.
- Shield is connected to element.

